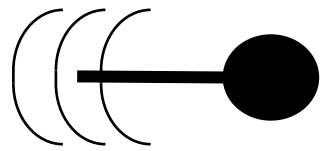


radio-tracking.eu



Please be aware, that all the following steps are without any warranty!

Basic Setup

1. Download the latest image

Please visit the following website:

<https://radio-tracking.eu/impressum/downloads>

And download the latest File. This file includes already the operation system and all the programs you need to run the system. Please be aware, that everything is still in the early stages of development.

2. Unzip the image

To decompress the image please download the following software:

<http://www.7-zip.org/>

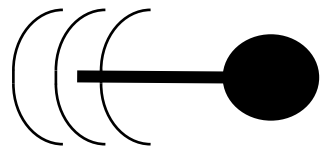
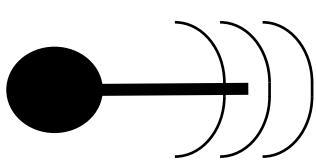
And install it. After the Installation decompress the image – if you are using windows, it is just a right-click on the downloaded file -> 7z -> decompress here.

3. Install the Image on the SD-Memory Card using win32DiskImager

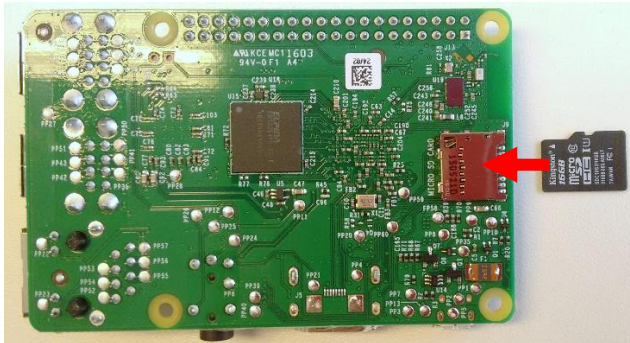
<https://sourceforge.net/projects/win32diskimager/>

If you are using Windows, please download and install the win32diskimager. Start the win32diskimager.exe and grant it administrator rights (it should be automatically asking for it). Then:

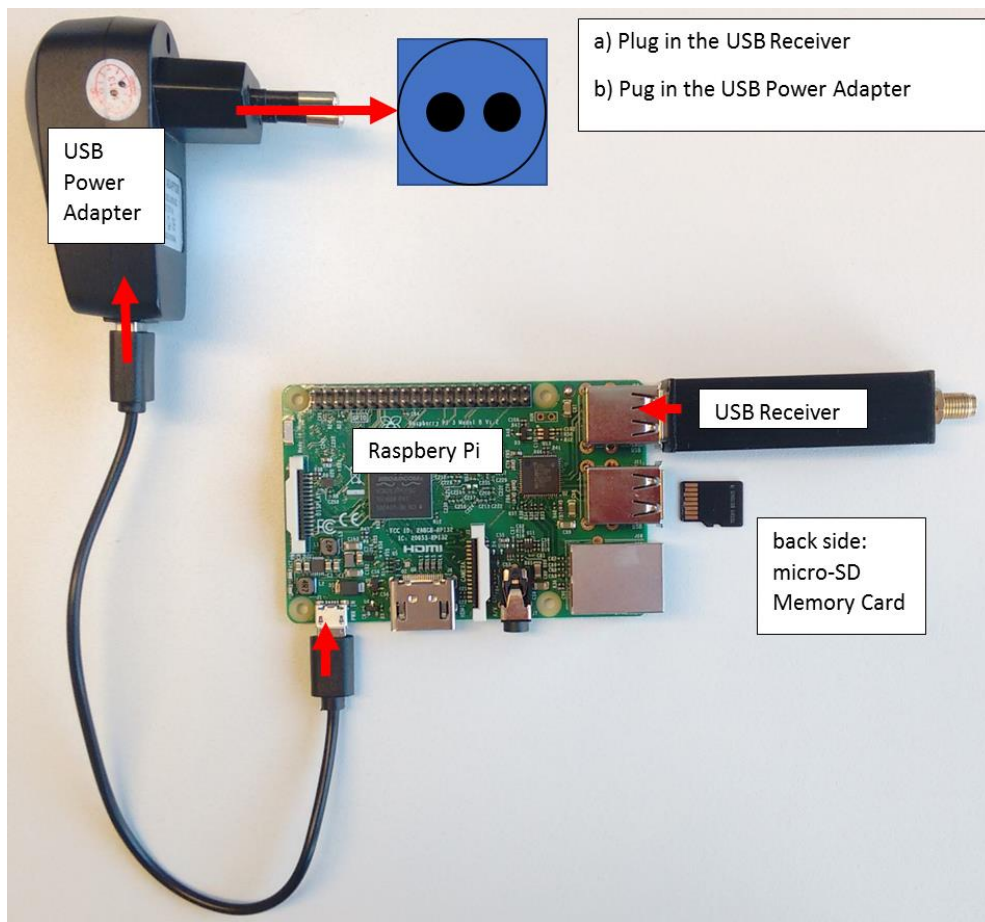
- a) Insert your mini-SD Card (capacity minimum of 32GB) into your SD-Card slot (using an adapter) or use an USB to mini SD Card adapter to connect it to the PC
- b) Choose the Decompressed Image File by clicking on the little folder
- c) Select your device (be careful to choose the right one – all data on that device will be deleted)
- d) Press the Write Button – and confirm that all data will be deleted.
- e) This may take a while



4. Insert the memory card into the Raspberry Pi 3

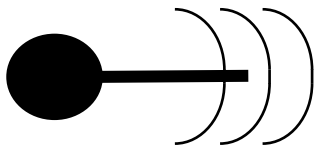


5. Connect the hardware

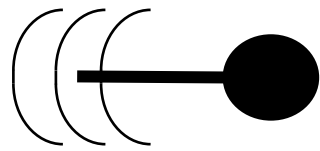


The USB-Receiver needs to be connected to an antenna of your desire – you might need an adapter to do so (the USB Receiver got an female SMA input – not reversed)

6. Power Up the Raspberry Pi 3 - as soon as it is electrically connected it automatically boots.



radio-tracking.eu



7. Connect to the Raspberry Pi 3 Using your smartphone's or your laptop's WiFi.
 - WiFi-Name: rteuv2
 - Password: sdrtracking
8. Enter the IP-Address: 192.168.1.1 in your internet-browser and you will be asked to enter a username and password.
 - Username: pi
 - Password: rteuv2!



9. Update to the latest edition – click on:
 - Menu -> System -> Software -> Update
 - Click on the button: Download Recipes and HTML Files
10. Use the desired features as described in your browser (Introduction)

For further instructions please have a look at <https://radio-tracking.eu>:

- improve detection range
- using batteries and solar panels
- remote access
- installing a camera with motion detection

Happy Tracking

PS: Thanks for all the support!